



Nanneella Estate Primary School

Newsletter: Term 3 Week 10

September 19th, 2024

From the Principal—Tom Mangan

Science Day

Yesterday our students ventured to Raywood Primary School for a wonderful day participating in various science activities with our other Campaspe Cluster Schools. Students had a wonderful day and enjoyed the different activities as well as making connections with peers from other schools. This was great timing as we will be heading off on camp with these schools early next term.



Football Colours

Tomorrow sees us wrap up the term with Footy Colours and Hot Dogs while we are at Rochy PS. Students are invited to wear their footy colours to school and a reminder that the hot dogs ordered will be provided for lunch.

Early finish at 2:20pm, the bus will return to NEPS from Rochester PS at this time.

Enrolment details

Thank you to those families that have returned their enrolment detail forms and have checked/updated as required any details. If you are yet to do this it would be great to have it returned tomorrow before the end of term so they don't disappear during the term break. Otherwise early next term please.

NEPS NIPPERS

Our NEPS Nippers program has started for any prospective Prep students for 2025. This was a great success last year allowing our students to hit the ground running at the start of the year. Our prep students were able to settle into their learning environment confidently, having experienced the space as well as built relationships with peers.

Any families interested in seeing what our school can offer your child and family, please get in contact with me (Tom Mangan, Principal), to book in on 5484 5395 or 0408 403 884.

2024 TERM DATES

TERM 1
Tuesday 30th January—
Thursday 28th March

TERM 2
Monday 15th April—
Friday 28th June

TERM 3
Monday 15th July—
Friday 20th September

TERM 4
Monday 7th October—
Friday 20th December

OUR SUPPORTERS IN 2024

Nanneella General Store
Apex Club Echuca/Moama
Moama Bowling Club
Brady Electrical
Firepits R Us—Kyabram
Bridgestone Echuca
Bunnings Echuca
WB Hunters Echuca
Lions Club Rochester
Rotary Club Rochester
Rochester RSL
Shire of Campaspe
Breakfast Club



School Hours

8:50am to 3:20pm.

Staff are on yard duty from
8:35am until **3:35pm**.

Parents should contact the school to discuss alternative arrangements if needed.

We acknowledge the Bangarang / Yorta Yorta People, the traditional custodians of the land on which we are gathered.

We welcome all Aboriginal and Torres Strait Islander people to our school.



Term 4 Mango Fundraiser

Mango order forms were sent home last week.

Order forms are due back at school with the money or EFT'd by October 24th.

Expected delivery will be the week beginning 2nd December.



Holidays

Over the holidays the veggie garden can get a bit over run without staff and students regularly weeding and checking on things. If you have free time and are looking for something to do, feel free to pop into school, have a play on the playground and give an area a bit of TLC to ensure it is looking great for our return next term.

I will be in for a few days in the second week of the holidays to try and complete a few jobs in the yard.

Camps

Early next term we have both our Gr 3/4 and 5/6 Cluster Camps.

Our Gr 3/4's will be heading to Camp Kookaburra in Corop for 2 nights from Wednesday 16th – Friday 18th of October.

The Gr 5/6's will head to Anglesea for 2 nights from Tuesday 22nd – Thursday 24th October. I will be heading away on Camp with these students. Mrs Kemp will be away on Long Service Leave from Friday 18th – Friday 25th of October so we will have Mrs Pearson replacing her at school. Michelle and Lesley will be at school supporting as well while I am away on camps.

DATES TO REMEMBER – 2024	
	September
Friday 20th	Last Day Term 3—early finish 2.20pm Footy Colours/Hot Dog Day at Rochester PS
TERM 4	October
Monday 7th	School resumes
Wednesday 16th—18th	Grade 3/4 Cluster—Camp Kookaburra
Tuesday 22nd—24th	Grade 5/6 Cluster—Anglesea Camp
	November
Monday 4th	Pupil Free Day
Tuesday 5th	Melbourne/Echuca Cup Day
Wednesday 6th	Kaboom Sports—St Joe's PS @ Rochester P—2

PROTECT

Protecting children & young people from abuse is our responsibility



HELP IS BUT A PHONE CALL AWAY

LIFELINE

13 11 14

KID'S HELPLINE

1800 55 1800

BEYOND BLUE

1300 22 4636

Child Safety and wellbeing at Nanneella Estate Primary school

Information for families and the school community

The Victorian Government has announced new [Child Safe Standards](#) to further strengthen child safety across organisations, including schools. The new standards recognise the critical importance of families and the broader school community in maintaining and promoting child safety and well being.

Nanneella Estate PS has reviewed and updated our child safety policies and procedures to ensure they meet the requirements of the new standards. These are available to view on our school website, via uEducateUs, and the general office @ school.

We are committed to continuous improvement in our approach to child safety and wellbeing and welcome feedback from families and members of our school community on ways we can further strengthen our child safety policies, procedures and practices.

If you have any suggestions, comments or questions, please contact Nanneella Estate PS at nanneella.estate.ps@education.vic.gov.au or by phone on 03 5484 5395.

There are 11 Child Safe Standards:

[Standard 1: Culturally safe environments](#) – Establish a culturally safe environment in which the diverse and unique identities and experiences of Aboriginal children and young people are respected and valued.

[Standard 2: Leadership, governance and culture](#) – Ensure that child safety and wellbeing are embedded in school leadership, governance and culture.

[Standard 3: Child and student empowerment](#) – Children and young people are empowered about their rights, participate in decisions affecting them and are taken seriously.

[Standard 4: Family engagement](#) – Families and communities are informed and involved in promoting child safety and wellbeing.

[Standard 5: Diversity and equity](#) – Equity is upheld and diverse needs are respected in policy and practice.

[Standard 6: Suitable staff and volunteers](#) – People working with children and young people are suitable and supported to reflect child safety and wellbeing values in practice.

[Standard 7: Child-focused complaints processes](#) – Ensure that processes for complaints and concerns are child focused.

[Standard 8: Child safety knowledge, skills and awareness](#) – Staff and volunteers are equipped with the knowledge, skills and awareness to keep children and young people safe through ongoing education and training.

[Standard 9: Physical and online environments](#) – Physical and online environments promote safety and wellbeing while minimising the opportunity for children and young people to be harmed.

[Standard 10: Review of child safety practices](#) - Implementation of the Child Safe Standards is regularly reviewed and improved.

[Standard 11: Implementation of child safety practices](#) – Policies and procedures that document how schools are safe for children, young people and students.

FOUR CRITICAL ACTIONS FOR SCHOOLS

Responding to Incidents, Disclosures and Suspicions of Child Abuse

1 RESPONDING TO AN EMERGENCY

If there is no risk of immediate harm go to **Action 2**

- If a child is at immediate risk of harm you **must** ensure their safety by:
- separating alleged victims and others involved
 - administering first aid
 - calling **000 for urgent medical and/or police assistance** to respond to immediate health or safety concerns
 - identifying a contact person at the school for future liaison with Police.

Where necessary you may also need to maintain the integrity of the potential crime scene and preserve evidence.

2 REPORTING TO AUTHORITIES / REFERRING TO SERVICES

As soon as immediate health and safety concerns are addressed you **must** report all incidents, suspicions and disclosures of child abuse as soon as possible. Failure to report physical and sexual child abuse may amount to a criminal offence.

Q: Where does the source of suspected abuse come from?

WITHIN THE SCHOOL

VICTORIA POLICE
You **must** report all instances of suspected child abuse involving a school staff member, contractor, volunteer or visitor to Victoria Police.

You **must also** report **internally** to:

- GOVERNMENT SCHOOLS**
 - School principal and/or leadership team
 - Employee Conduct Branch
 - DET Incident Support and Operations Centre
- CATHOLIC SCHOOLS**
 - School principal and/or leadership team
 - Diocesan education office.
- INDEPENDENT SCHOOLS**
 - School principal and/or school champion
 - Commission for Children and Young People on **1300 782 878**

All allegations of reportable conduct **must** be reported as soon as possible to:

- GOVERNMENT SCHOOLS**
 - Employee Conduct Branch
- CATHOLIC SCHOOLS**
 - Diocesan education office
- INDEPENDENT SCHOOLS**
 - Commission for Children and Young People on **1300 782 878**.

OTHER CONCERNS

If you believe that a child is not subject to abuse, but you still hold **significant concerns** for their wellbeing you **must** still act. This may include making a referral or seeking advice from:

- Child FIRST/The Orange Door (in circumstances where the family are open to receiving support)
- DHHS Child Protection
- Victoria Police.

For suspected student sexual assault, please follow the **Four Critical Actions** as soon as you witness an incident, receive a disclosure or form a reasonable belief* that a child has, or is at risk of being abused.

Actions: Student Sexual Offending

YOU MUST TAKE ACTION

- You **must** act, by following the **Four Critical Actions**, as soon as you witness an incident, receive a disclosure or form a reasonable belief* that a child has, or is at risk of being abused.

*A reasonable belief is a deliberately low threshold. This enables authorities to investigate and take action.

As a school staff member, you play a **critical role** in protecting children in your care.

- It is strongly recommended that you use the **Responding to Suspected Child Abuse Template** to keep clear and comprehensive notes, even if you make a decision not to report.

3 CONTACTING PARENTS/CARERS

Your principal **must** consult with DHHS Child Protection or Victoria Police to determine what information can be shared with parents/carers. They may advise:

- not to contact** the parents/carer (e.g. in circumstances where the parents are alleged to have engaged in the abuse, or the child is a mature minor and does not wish for their parent/carer to be contacted)
- to contact** the parents/carers and provide agreed information (this must be done as soon as possible, preferably on the same day of the incident, disclosure or suspicion)
- how to communicate** with all relevant parties with consideration for their safety.

4 PROVIDING ONGOING SUPPORT

Your school **must** provide support for children impacted by abuse. This should include the development of a **Student Support Plan** in consultation with wellbeing professionals. This is an essential part of your duty of care requirements.

Strategies may include development of a safety plan, direct support and referral to wellbeing professionals and support.

You **must** follow the **Four Critical Actions** every time you become aware of a further instance or risk of abuse. This includes reporting new information to authorities.

CONTACT

DHHS CHILD PROTECTION

- AREA**
 - North Division **1300 664 877**
 - South Division **1300 655 795**
 - East Division (Rural) **1800 075 599**
 - West Division (Metro) **1300 664 877**
- AFTER HOURS**
After hours, weekends, public holidays: **13 13 78**
- CHILD FIRST**
<https://services.dhhs.vic.gov.au/child-first-and-support/teams>
- ORANGE DOOR**
<https://www.vic.gov.au/family-violence/>
[The-orange-door.html](https://www.vic.gov.au/orange-door/)

VICTORIA POLICE

000 or your local police station

DET INCIDENT SUPPORT AND OPERATIONS CENTRE
1900 126 126

INCIDENT MANAGEMENT AND SUPPORT UNIT
1900 126 126

EMPLOYEE CONDUCT BRANCH
(03) 9637 2595

DIOCESAN OFFICE
Melbourne **(03) 9087 0228**
Ballarat **(03) 5337 7195**
Sale **(03) 5422 6600**
Shepparton **(03) 5443 2377**

INDEPENDENT SCHOOLS

VICTORIA
(03) 9625 7200

THE LOOKOUT
The LOOKOUT has a service directory, information, and evidence based guidance to help you respond to family violence: <https://www.lookout.org.au>

Family violence victims/supporters can be referred to **1800 Respect** for counselling, information and a referral service: **1800 733 732**

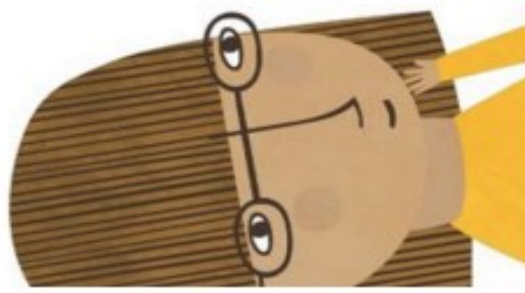
PROTECT

THE EDUCATION STATE

VICTORIA

CECV

03 9637 2595





Love to run, jump, and throw? Enjoy having fun, spending time with family and friends, and achieving your personal best?

Why not give athletics a try?

WE ARE LITTLE ATHLETICS

Ages 5-17 years

SEASON 2024-25

Training Dates

11th & 18th October

Season Dates

25th October - 20th December

31st January - 14th February

MEET TIME & LOCATION



Fridays

5:30 pm Warm Up

5:45 pm Start

Windridge Oval, Rochester



REGISTER TODAY

lavic.com.au

ROCHESTER LAWN TENNIS CLUB



SEASON STARTS
OCTOBER 12th

JUNIOR FEES SUBSIDISED 2024

Get your child ready for the tennis court with our Kids Tennis "Hotshots or Competition". Our Club offers a fun and supportive environment.

For more information contact

0448557139 or rochesterlrtc@gmail.com



Learn to Swim School Holiday Intensive Program

Monday, 30 September -
Friday, 4 October
Ages 5 - 14

Use the QR code for
information and to register



Fast track your child's swimming skills
with our 5 day intensive swimming and
water safety program.