



Nanneella Estate Primary School

Newsletter: Term 4 Week 1

October 10th, 2024

From the Principal—Tom Mangan

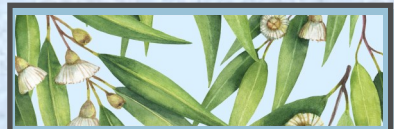
Welcome back to our final term for 2024. It is a bit scary how quickly the year has gone and I am sure this term will fly by too.



On Monday, as well as welcoming the students back, we also welcomed a new member of staff to our team, Miss Bridie Whitford. Bridie will be teaching our P-3 class for the remainder of the year allowing me to focus on some whole school work that needs some attention. Miss Whitford has settled in well and has created fantastic relationships with the students already.

Science Day

Last term saw us wind up the term with our Campaspe Cluster Science Day at Raywood Primary School. This was a fantastic opportunity for our students to continue to develop relationships with students from our Cluster Schools. Our students will continue to develop these relationships in the next 2 weeks during our camps.



2024 TERM DATES

TERM 1

Tuesday 30th January—
Thursday 28th March

TERM 2

Monday 15th April—
Friday 28th June

TERM 3

Monday 15th July—
Friday 20th September

TERM 4

Monday 7th October—
Friday 20th December



Parent Occupation Review

A reminder to please check over these documents to ensure that we have the correct details on record for your family. Thank you to the families that have already returned these. It is an important process to be followed as schools receive various forms of funding based off this information as well as being eligible for some grants opportunities.

As a result of what we already have on file, we are being audited later this term. Please return your forms asap.

NEPS NIPPERS

Our NEPS Nippers program has started for any prospective Prep students for 2025. This was a great success last year allowing our students to hit the ground running at the start of the year. Our prep students were able to settle into their learning environment confidently, having experienced the space as well as built relationships with peers.

Any families interested in seeing what our school can offer your child and family, please get in contact with me (Tom Mangan, Principal), to book in on 5484 5395 or 0408 403 884.

OUR SUPPORTERS IN 2024

Nanneella General Store
Apex Club Echuca/Moama
Moama Bowling Club
Brady Electrical
Firepits R Us—Kyabram
Bridgestone Echuca
Bunnings Echuca
WB Hunters Echuca
Lions Club Rochester
Rotary Club Rochester
Rochester RSL
Shire of Campaspe
Breakfast Club



School Hours

8:50am to 3:20pm.

Staff are on yard duty from
8:35am until 3:35pm.

Parents should contact the school to discuss alternative arrangements if needed.

We acknowledge the Bangarang / Yorta Yorta People, the traditional custodians of the land on which we are gathered.

We welcome all Aboriginal and Torres Strait Islander people to our school.



3/4 Kookaburra and 5/6 Anglesea Camps

Next week our 3/4 students will venture off to Camp Kookaburra in Corop. Students will be joining our other cluster schools for 3 days of great activities that will challenge them as well as building their team work. A reminder students will need to be dropped off to Camp Kookaburra on Wednesday at 11:00am and collected on Friday afternoon at 1:30pm.



Week 3 will see our grade 5 students travel to Anglesea to enjoy camp by the beach. These students will be meeting at Elmore Primary School early Tuesday morning and returning to Elmore Primary School late Thursday afternoon.

I will be attending both of these camps and am looking forward to the experience.

Pupil Free Day

A reminder that the Monday before Melbourne Cup, 4th of November, will be a pupil free day for our students with the Tuesday being a public holiday.



Term 4 Mango Fundraiser



Mango order forms were sent home last term.

Thanks to everyone for your orders and payment so far.

Only 2 weeks to go to get your orders in for the delicious Mangoes.

Order forms are due back at school with the money or EFT'd by October 24th.

Expected delivery will be the week beginning 2nd December.

DATES TO REMEMBER – 2024	
TERM 4	October
Wednesday 16th–18th	Grade 3/4 Cluster—Camp Kookaburra
Tuesday 22nd–24th	Grade 5/6 Cluster—Anglesea Camp
	November
Monday 4th	Pupil Free Day
Tuesday 5th	Melbourne/Echuca Cup Day
Wednesday 6th	Kaboom Sports—St Joe's PS @ Rochester P—2

PROTECT

Protecting children & young people from abuse is our responsibility



HELP IS BUT A PHONE CALL AWAY

LIFELINE

13 11 14

KID'S HELPLINE

1800 55 1800

BEYOND BLUE

1300 22 4636

Melbourne Cup at Rochester Pony Club

On Friday 4th October 2024 we had some special visitors come to Rochester Pony Club. The horses who won the Melbourne Cup from the past years gave us a special presentation.



Michelle Payne and Sheila Laxon did a presentation about their life and how they got the Melbourne Cup. Michelle is the First Lady jockey to ride a Melbourne Cup winning horse. Sheila was the First Lady race-horse trainer to win a Melbourne Cup. After that everyone went in a single file line and got a hat and a sticker, even the parents from Michelle & Sheila.

We got a group photo with the Living Legends horses Prince of Penzance & Twilight Payment. And then we got dressed up into little jockeys and tacked up our horses like racehorses. We all went together after they tacked up their horses for another group photo but with the Melbourne Cup trophy.



We waited for the Living Legends to go first and then we all went in a single file line following the Living Legends to the athletics ground. When we got to the gates we went in a circle and the horses were acting up. Some of the horses went trotting off leaving the others behind and the ones left behind started acting up, even the Living Legends. One of them thought it was a race and almost took off when we were leaving the athletics ground. Afterwards when all the pony club kids got back to the pony club grounds we hopped off our horses and untacked/rugged them.





When I was done rugging Minty (my horse) I had to go to the athletics ground with my cousin Emme. Emme then got an ice cone for 2 dollars. Then we went back to the car. After a while we got Minty and put him in the float after putting the last rug on.

It was a very fun and very exciting day for the living Legends coming to Rochester for the first time but sadly It won't happen again.

By Brooke Tait



Child Safety and wellbeing at Nanneella Estate Primary school

Information for families and the school community

The Victorian Government has announced new [Child Safe Standards](#) to further strengthen child safety across organisations, including schools. The new standards recognise the critical importance of families and the broader school community in maintaining and promoting child safety and well being.

Nanneella Estate PS has reviewed and updated our child safety policies and procedures to ensure they meet the requirements of the new standards. These are available to view on our school website, via uEducateUs, and the general office @ school.

We are committed to continuous improvement in our approach to child safety and wellbeing and welcome feedback from families and members of our school community on ways we can further strengthen our child safety policies, procedures and practices.

If you have any suggestions, comments or questions, please contact Nanneella Estate PS at nanneella.estate.ps@education.vic.gov.au or by phone on 03 5484 5395.

There are 11 Child Safe Standards:

[Standard 1: Culturally safe environments](#) – Establish a culturally safe environment in which the diverse and unique identities and experiences of Aboriginal children and young people are respected and valued.

[Standard 2: Leadership, governance and culture](#) – Ensure that child safety and wellbeing are embedded in school leadership, governance and culture.

[Standard 3: Child and student empowerment](#) – Children and young people are empowered about their rights, participate in decisions affecting them and are taken seriously.

[Standard 4: Family engagement](#) – Families and communities are informed and involved in promoting child safety and wellbeing.

[Standard 5: Diversity and equity](#) – Equity is upheld and diverse needs are respected in policy and practice.

[Standard 6: Suitable staff and volunteers](#) – People working with children and young people are suitable and supported to reflect child safety and wellbeing values in practice.

[Standard 7: Child-focused complaints processes](#) – Ensure that processes for complaints and concerns are child focused.

[Standard 8: Child safety knowledge, skills and awareness](#) – Staff and volunteers are equipped with the knowledge, skills and awareness to keep children and young people safe through ongoing education and training.

[Standard 9: Physical and online environments](#) – Physical and online environments promote safety and wellbeing while minimising the opportunity for children and young people to be harmed.

[Standard 10: Review of child safety practices](#) - Implementation of the Child Safe Standards is regularly reviewed and improved.

[Standard 11: Implementation of child safety practices](#) – Policies and procedures that document how schools are safe for children, young people and students.

FOUR CRITICAL ACTIONS FOR SCHOOLS

Responding to Incidents, Disclosures and Suspicions of Child Abuse

1 RESPONDING TO AN EMERGENCY

If there is no risk of immediate harm go to **Action 2**

- If a child is at immediate risk of harm you **must** ensure their safety by:
- separating alleged victims and others involved
 - administering first aid
 - calling **000 for urgent medical and/or police assistance** to respond to immediate health or safety concerns
 - identifying a contact person at the school for future liaison with Police.

Where necessary you may also need to maintain the integrity of the potential crime scene and preserve evidence.

2 REPORTING TO AUTHORITIES / REFERRING TO SERVICES

As soon as immediate health and safety concerns are addressed you **must** report all incidents, suspicions and disclosures of child abuse as soon as possible. Failure to report physical and sexual child abuse may amount to a criminal offence.

Q: Where does the source of suspected abuse come from?

WITHIN THE SCHOOL

VICTORIA POLICE
You **must** report all instances of suspected child abuse involving a school staff member, contractor, volunteer or visitor to Victoria Police.

You **must also** report **internally** to:

- GOVERNMENT SCHOOLS**
 - School principal and/or leadership team
 - Employee Conduct Branch
 - DET Incident Support and Operations Centre
- CATHOLIC SCHOOLS**
 - School principal and/or leadership team
 - Diocesan education office
- INDEPENDENT SCHOOLS**
 - School principal and/or school champion
 - Commission for Children and Young People on **1300 782 878**

All allegations of reportable conduct **must** be reported as soon as possible to:

- GOVERNMENT SCHOOLS**
 - Employee Conduct Branch
- CATHOLIC SCHOOLS**
 - Diocesan education office
- INDEPENDENT SCHOOLS**
 - Commission for Children and Young People on **1300 782 878**.

OTHER CONCERNS

If you believe that a child is not subject to abuse, but you still hold **significant concerns** for their wellbeing you **must** still act. This may include making a referral or seeking advice from:

- Child FIRST/The Orange Door (in circumstances where the family are open to receiving support)
- DHHS Child Protection
- Victoria Police.

For suspected student sexual assault, please follow the **Four Critical Actions** as soon as you witness an incident, receive a disclosure or form a reasonable belief* that a child has, or is at risk of being abused.

Actions: Student Sexual Offending

YOU MUST TAKE ACTION

- You **must** act, by following the **Four Critical Actions**, as soon as you witness an incident, receive a disclosure or form a reasonable belief* that a child has, or is at risk of being abused.

*A reasonable belief is a deliberately low threshold. This enables authorities to investigate and take action.

3 CONTACTING PARENTS/CARERS

Your principal **must** consult with DHHS Child Protection or Victoria Police to determine what information can be shared with parents/carers. They may advise:

- not to contact** the parents/carer (e.g. in circumstances where the parents are alleged to have engaged in the abuse, or the child is a mature minor and does not wish for their parent/carer to be contacted)
- to contact** the parents/carers and provide agreed information (this must be done as soon as possible, preferably on the same day of the incident, disclosure or suspicion)
- how to communicate** with all relevant parties with consideration for their safety

4 PROVIDING ONGOING SUPPORT

Your school **must** provide support for children impacted by abuse. This should include the development of a **Student Support Plan** in consultation with wellbeing professionals. This is an essential part of your duty of care requirements.

Strategies may include development of a safety plan, direct support and referral to wellbeing professionals and support.

You **must** follow the **Four Critical Actions** every time you become aware of a further instance or risk of abuse. This includes reporting new information to authorities.

As a school staff member, you play a **critical role** in protecting children in your care.

- It is strongly recommended that you use the **Responding to Suspected Child Abuse Template** to keep clear and comprehensive notes, even if you make a decision not to report.

CONTACT

DHHS CHILD PROTECTION

- AREA**
 - North Division **1300 664 877**
 - South Division **1300 655 795**
 - East Division (Rural) **1800 075 599**
 - West Division (Metro) **1300 664 877**
- AFTER HOURS**
After hours, weekends, public holidays: **13 13 78**
- CHILD FIRST**
<https://services.dhhs.vic.gov.au/child-first-and-support/teams>
- ORANGE DOOR**
<https://www.vic.gov.au/family-violence/>
[The-orange-door.html](https://www.vic.gov.au/orange-door/)

VICTORIA POLICE

000 or your local police station

DET INCIDENT SUPPORT AND OPERATIONS CENTRE

1900 126 126

INCIDENT MANAGEMENT AND SUPPORT UNIT

1900 126 126

EMPLOYEE CONDUCT BRANCH

(03) 9637 2595

DIOCESAN OFFICE

Melbourne **(03) 9087 0228**

Bellarat **(03) 5337 7195**

Sale **(03) 5622 6600**

Sandhurst **(03) 5443 2377**

INDEPENDENT SCHOOLS

VICTORIA
(03) 9625 7200

THE LOOKOUT

The LOOKOUT has a service directory, information, and evidence based guidance to help you respond to family violence: <https://www.lookout.org.au>

Family violence victims/supporters can be referred to **1800 Respect** for counselling, information and a referral service: **1800 733 732**

PROTECT

THE EDUCATION STATE

VICTORIA

CECV

CHILD PROTECTION

