



Nanneella Estate Primary School

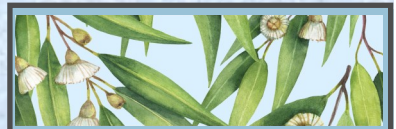
Newsletter: Term 3 Week 6

August 22nd, 2024

From the Principal—Tom Mangan

Campaspe Cluster Grade 3–6 Athletics

Friday 23rd of August saw our Grade 3-6 students travel over to Bendigo to participate in the Campaspe Cluster Athletics Carnival. Our students did a wonderful job of representing our school and themselves proudly.



2024 TERM DATES

TERM 1

Tuesday 30th January—
Thursday 28th March

TERM 2

Monday 15th April—
Friday 28th June

TERM 3

Monday 15th July—
Friday 20th September

TERM 4

Monday 7th October—
Friday 20th December



THE RESILIENCE PROJECT™

Resilience Project Launch

Next week our students will be joining with Rochester Primary School for 2 days, Wednesday and Friday.

On Wednesday we will be travelling together to St Joseph’s College Echuca for the launch of the Resilience Project program that we will be participating in next year. We are very fortunate to be able to be involved in this with the support of the Rochester Community House.

Scouts Visit

On Monday 16th of September our School will be visited by Cade Kindness who is in the process of getting Rochester’s Scouts up and running, please see the attached flyer for more information and Cade’s details.



NEPS NIPPERS

Our NEPS Nippers program has started for any prospective Prep students for 2025. This was a great success last year allowing our students to hit the ground running at the start of the year. Our prep students were able to settle into their learning environment confidently, having experienced the space as well as built relationships with peers.

Any families interested in seeing what our school can offer your child and family, please get in contact with me (Tom Mangan, Principal), to book in on 5484 5395 or 0408 403 884.

OUR SUPPORTERS IN 2024

Nanneella General Store
Apex Club Echuca/Moama
Moama Bowling Club
Brady Electrical
Firepits R Us—Kyabram
Bridgestone Echuca
Bunnings Echuca
WB Hunters Echuca
Lions Club Rochester
Rotary Club Rochester
Rochester RSL
Shire of Campaspe
Breakfast Club



School Hours

8:50am to 3:20pm.

Staff are on yard duty from
8:35am until 3:35pm.

Parents should contact the
school to discuss alternative
arrangements if needed.

We acknowledge the Bangarang /
Yorta Yorta People, the
traditional custodians of the
land on which we are gathered.

We welcome all
Aboriginal and
Torres Strait
Islander people
to our school.



Cluster Science Day

Wednesday 18th of September all of our students will be traveling to Raywood Primary School to participate in our Campaspe Cluster Science Day. Students will be joining with other schools in our cluster to participate in several fun science rotations. This is another great opportunity for our students to develop connections with students from other schools, especially with our 3/4 and 5/6 camps coming up early next term.

Pie Drive

Pies can be picked up from the Rochester Bakery after 3.00pm today. Thank you for your support.

Term 4 Mango Fundraiser

It's that time of the year again, my goodness the past year has literally flown.

This is one of our best and most delicious fundraisers, order forms will be sent home today.



Final Day of term

Friday 20th of September is our final day for Term 3. Students have the option to come dressed in their favourite football colours. They can also order a hotdog for lunch which they will receive at Rochester Primary during our normal visit.

Friday is an early finish at 2:20pm, the bus will return to NEPS from Rochester PS at this time.

DATES TO REMEMBER – 2024	
	September
Wednesday 11th	Resilience Project—Echuca School Council—5.30 pm @ School
Monday 16th	Rochester Scout Visit—Cade Kindness
Wednesday 18th	Cluster Science Day—Raywood PS
Friday 20th	Last Day Term 3—early finish
TERM 4	October
Monday 7th	School resumes
Wednesday 16th—18th	Grade 3/4 Cluster—Camp Kookaburra
Tuesday 22nd—24th	Grade 5/6 Cluster—Anglesea Camp

PROTECT

Protecting children & young people
from abuse is our responsibility



HELP IS BUT A PHONE CALL AWAY

LIFELINE

13 11 14

KID'S HELPLINE

1800 55 1800

BEYOND BLUE

1300 22 4636



Department
of Education

Dear Families,

We want to let you know about our school's emergency management plan. Our school plans for a range of hazards, such as bush or grass fire, severe weather, medical emergencies, building fires, intruders etc. We develop specific response procedures to address these risks.

We also conduct drills regularly, ensuring that our core procedures of on-site and off-site evacuation, sheltering-in-place, and lockdown/lockouts are well-rehearsed and understood by staff and students.

If we enact our emergency management plan, we will notify you by any of the available means at the time, including text messages, uEducateUs and Facebook, with updates on our actions. If there is anything we need you to do, we will let you know. Phone lines will need to be kept clear during any such emergency, so we ask families to cooperate with us in this matter.

During emergencies, we will work with emergency services and the Department of Education for safety advice and support. Please know that keeping our students and staff safe is our top priority.

Yours sincerely,

A handwritten signature in black ink, appearing to be "Tom Mangan".

Tom Mangan

PRINCIPAL

Our school is a **Category 4 School.**

We will close on a day forecasted as a **Catastrophic** fire danger rating in the **Northern Country** fire district.

All school bus routes that travel through a **Catastrophic** fire district will be **cancelled**.

Schools in Category 3 and Category 4 on the Bushfire At-Risk Register

School preparations for the bushfire season

Each year, we undertake a range of activities to ensure the safety of our school and to prepare for bushfires and grassfires.

An important part of this process is communicating to parents what will happen when certain fire danger ratings are issued to help ensure the safety of students and staff.



Our school has been identified as being at risk of bushfire or grassfire and is a **Category 4 school.**

Our school will **close** on a day forecasted as **Catastrophic fire danger rating** in **the Northern Country fire district**.

Closure of the school due to a Catastrophic fire danger rating will be enacted when the Bureau of Meteorology forecast and related public safety messaging are confirmed. Due to uncertainties in the forecast, the timing of this confirmation may vary. Information regarding potential or confirmed Catastrophic fire danger days will be communicated to you by text, email and UEducateUs notification.

It is also important to be aware that:

- ◆ No one will be on site on days where the school is closed due to a forecast Catastrophic day.
- ◆ All bus routes that travel through the Catastrophic area will be cancelled.
- ◆ School camps will be cancelled if a Catastrophic fire danger rating day is forecast for fire weather district in which the camp is located, or if the travel involves passing through areas that have Catastrophic fire danger.

As part of preparing our school for the fire season, we have updated and completed our Emergency Management Plan and removal of vegetation close to buildings, ensuring the lawn is regularly mown, yards are kept in a clear manner, gutters are cleaned regularly.

What can families and the school community do to help us prepare?

- ◆ Ensure we have your current contact details, including your mobile phone numbers.
- ◆ Keep in touch with us by reading our newsletters, checking our website <https://www.nanneella-estate-ps.vic.edu.au/> by talking to your child's teacher or any other member of the teaching staff about our emergency management plan.
- ◆ Make sure your family's bushfire survival plan is up-to-date and includes alternative care arrangements if our school is closed due to Catastrophic fire danger. Further information can be found on the [CFA's website](#).

- ◆ Action your family's bushfire survival plan if your own triggers are met. Our school community may be spread out across many areas and some families may be at higher risk than others. Your family's safety is critical, so please let us know if you are actioning your bushfire survival plan and if your children will be absent on these days.
- ◆ If your child is old enough, talk to [them about bushfires](#) and your family's bushfire survival plan.

Families are encouraged to action their [Bushfire Survival Plan](#) on Catastrophic fire danger rating days in their district. The safest option is to leave the night before or early on the morning of the Catastrophic day. **On such days, children should never be left at home alone or in the care of older children.**

You can find more information on emergencies, warnings and preparedness actions here:

- ◆ VicEmergency app – that can be downloaded on your android and iOS mobile devices
- ◆ VicEmergency Hotline (1800 226 226)
- ◆ Website <https://emergency.vic.gov.au>
- ◆ Facebook (<https://www.facebook.com/vicemergency>)
- ◆ Twitter (<https://twitter.com/vicemergency>)
- ◆ ABC local radio, Sky News and other emergency broadcasters

Frequently Asked Questions

What is the department's policy?

The Department of Education annually assesses the fire risk of all schools and early childhood services with the support of the Commonwealth Scientific and Industrial Research Organisation (CSIRO). They are allocated a category of risk (categories 0 to 6). Schools and services that are Categories 0-3 are published on the [Bushfire At-Risk Register \(BARR\)](#). Schools at some risk of bushfire and grassfire are published on the [Category 4 List](#).

The department's [Bushfire and Grassfire Preparedness Policy](#) requires all schools and early childhood services on the BARR and the Category 4 List to close when a Catastrophic fire danger rating day is forecast in their fire weather district. All school bus routes which travel in or through a district with Catastrophic fire danger must also be cancelled.

The policy also requires that schools at the highest risk of bushfire (those in Categories 0, 1 and 2 of the Bushfire At-Risk Register) enact pre-emptive action plans based on the fire danger forecast for their Local Government Area (LGA).

Who issues fire danger forecasts?

The Bureau of Meteorology (BoM) provides public fire danger rating forecasts each day of the fire danger period using fire weather district areas. In Victoria, there are 9 fire weather districts, which are based on Local Government Area boundaries.

The department uses these forecasts when supporting schools to enact their pre-emptive bushfire actions plans.

Child Safety and wellbeing at Nanneella Estate Primary school

Information for families and the school community

The Victorian Government has announced new [Child Safe Standards](#) to further strengthen child safety across organisations, including schools. The new standards recognise the critical importance of families and the broader school community in maintaining and promoting child safety and well being.

Nanneella Estate PS has reviewed and updated our child safety policies and procedures to ensure they meet the requirements of the new standards. These are available to view on our school website, via uEducateUs, and the general office @ school.

We are committed to continuous improvement in our approach to child safety and wellbeing and welcome feedback from families and members of our school community on ways we can further strengthen our child safety policies, procedures and practices.

If you have any suggestions, comments or questions, please contact Nanneella Estate PS at nanneella.estate.ps@education.vic.gov.au or by phone on 03 5484 5395.

There are 11 Child Safe Standards:

[Standard 1: Culturally safe environments](#) – Establish a culturally safe environment in which the diverse and unique identities and experiences of Aboriginal children and young people are respected and valued.

[Standard 2: Leadership, governance and culture](#) – Ensure that child safety and wellbeing are embedded in school leadership, governance and culture.

[Standard 3: Child and student empowerment](#) – Children and young people are empowered about their rights, participate in decisions affecting them and are taken seriously.

[Standard 4: Family engagement](#) – Families and communities are informed and involved in promoting child safety and wellbeing.

[Standard 5: Diversity and equity](#) – Equity is upheld and diverse needs are respected in policy and practice.

[Standard 6: Suitable staff and volunteers](#) – People working with children and young people are suitable and supported to reflect child safety and wellbeing values in practice.

[Standard 7: Child-focused complaints processes](#) – Ensure that processes for complaints and concerns are child focused.

[Standard 8: Child safety knowledge, skills and awareness](#) – Staff and volunteers are equipped with the knowledge, skills and awareness to keep children and young people safe through ongoing education and training.

[Standard 9: Physical and online environments](#) – Physical and online environments promote safety and wellbeing while minimising the opportunity for children and young people to be harmed.

[Standard 10: Review of child safety practices](#) - Implementation of the Child Safe Standards is regularly reviewed and improved.

[Standard 11: Implementation of child safety practices](#) – Policies and procedures that document how schools are safe for children, young people and students.

FOUR CRITICAL ACTIONS FOR SCHOOLS

Responding to Incidents, Disclosures and Suspicions of Child Abuse

1 RESPONDING TO AN EMERGENCY

If there is no risk of immediate harm go to **Action 2**

- If a child is at immediate risk of harm you **must** ensure their safety by:
- separating alleged victims and others involved
 - administering first aid
 - calling **000 for urgent medical and/or police assistance** to respond to immediate health or safety concerns
 - identifying a contact person at the school for future liaison with Police.

Where necessary you may also need to maintain the integrity of the potential crime scene and preserve evidence.

2 REPORTING TO AUTHORITIES / REFERRING TO SERVICES

As soon as immediate health and safety concerns are addressed you **must** report all incidents, suspicions and disclosures of child abuse as soon as possible. Failure to report physical and sexual child abuse may amount to a criminal offence.

Q: Where does the source of suspected abuse come from?

WITHIN THE SCHOOL

VICTORIA POLICE
You **must** report all instances of suspected child abuse involving a school staff member, contractor, volunteer or visitor to Victoria Police.

You **must also** report **internally** to:

- GOVERNMENT SCHOOLS**
 - School principal and/or leadership team
 - Employee Conduct Branch
 - DET Incident Support and Operations Centre
- CATHOLIC SCHOOLS**
 - School principal and/or leadership team
 - Diocesan education office
- INDEPENDENT SCHOOLS**
 - School principal and/or school champion
 - Commission for Children and Young People on **1300 782 878**

All allegations of reportable conduct **must** be reported as soon as possible to:

- GOVERNMENT SCHOOLS**
 - Employee Conduct Branch
- CATHOLIC SCHOOLS**
 - Diocesan education office
- INDEPENDENT SCHOOLS**
 - Commission for Children and Young People on **1300 782 878**.

WITHIN THE FAMILY OR COMMUNITY

DHHS CHILD PROTECTION
You **must** report to DHHS Child Protection if a child is considered to be:

- at risk of protection from child abuse
- at risk of being harmed (or has been harmed) and the harm has had, or is likely to have, a serious impact on the child's safety, stability or development.

VICTORIA POLICE

You **must also** report all instances of suspected sexual abuse (including grooming) to Victoria Police.

You **must also** report **internally** to:

- GOVERNMENT SCHOOLS**
 - School principal and/or leadership team
 - DET Incident Support and Operations Centre
- CATHOLIC SCHOOLS**
 - School principal and/or leadership team
 - Diocesan education office
- INDEPENDENT SCHOOLS**
 - School principal and/or champion.

YOU MUST TAKE ACTION

- You **must** act, by following the Four Critical Actions, as soon as you witness an incident, receive a disclosure or form a reasonable belief* that a child has, or is at risk of being abused.

*A reasonable belief is a deliberately low threshold. This enables authorities to investigate and take action.

As a school staff member, you play a **critical role** in protecting children in your care.

- It is strongly recommended that you use the **Responding to Suspected Child Abuse Template** to keep clear and comprehensive notes, even if you make a decision not to report.

3 CONTACTING PARENTS/CARERS

Your principal **must** consult with DHHS Child Protection or Victoria Police to determine what information can be shared with parents/carers. They may advise:

- not to contact** the parents/carer (e.g. in circumstances where the parents are alleged to have engaged in the abuse, or the child is a mature minor and does not wish for their parent/carer to be contacted)
- to contact** the parents/carers and provide agreed information (this must be done as soon as possible, preferably on the same day of the incident, disclosure or suspicion)
- how to communicate** with all relevant parties with consideration for their safety.

For suspected student sexual assault, please follow the **Four Critical Actions: Student Sexual Offending**

OTHER CONCERNS

If you believe that a child is not subject to abuse, but you still hold **significant concerns** for their wellbeing you **must** still act. This may include making a referral or seeking advice from:

- Child FIRST/The Orange Door (in circumstances where the family are open to receiving support)
- DHHS Child Protection
- Victoria Police.

4 PROVIDING ONGOING SUPPORT

Your school **must** provide support for children impacted by abuse. This should include the development of a **Student Support Plan** in consultation with wellbeing professionals. This is an essential part of your duty of care requirements.

Strategies may include development of a safety plan, direct support and referral to wellbeing professionals and support.

You **must** follow the **Four Critical Actions** every time you become aware of a further instance or risk of abuse. This includes reporting new information to authorities.

CONTACT

DHHS CHILD PROTECTION

- AREA**
 - North Division **1300 664 877**
 - South Division **1300 655 795**
 - East Division (Rural) **1800 075 599**
 - West Division (Metro) **1300 664 877**
- AFTER HOURS**
After hours, weekends, public holidays: **13 13 78**
- CHILD FIRST**
<https://services.dhhs.vic.gov.au/child-first-and-support/teams>
- ORANGE DOOR**
<https://www.vic.gov.au/family-violence/>
[The-orange-door.html](https://www.vic.gov.au/orange-door/)

VICTORIA POLICE

- 000** or your local police station
- DET INCIDENT SUPPORT AND OPERATIONS CENTRE**
1900 126 126
- INCIDENT MANAGEMENT AND SUPPORT UNIT**
1900 126 126
- EMPLOYEE CONDUCT BRANCH**
(03) 9637 2595
- DIOCESAN OFFICE**
Melbourne **(03) 9087 0228**
Ballarat **(03) 5337 7195**
Sale **(03) 5422 6600**
Sandhurst **(03) 5443 2377**

INDEPENDENT SCHOOLS

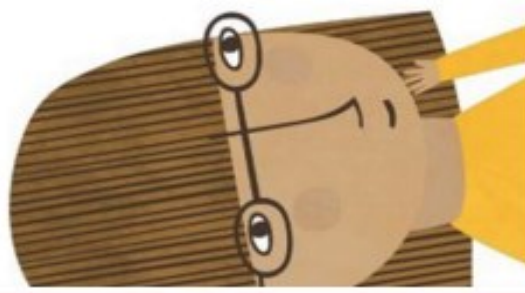
- VICTORIA**
(03) 9825 7200
- THE LOOKOUT**
The LOOKOUT has a service directory, information, and evidence based guidance to help you respond to family violence: <https://www.lookout.org.au>
- Family violence victims/supporters can be referred to **1800 Respect** for counselling, information and a referral service: **1800 733 732**

PROTECT

THE EDUCATION STATE

VICTORIA

CECV





1ST Rochester Scout Group

Joey and Cub Scouts are
amazing!

Check them out for your child



Joey Scouts are girls and boys aged 5-7

Cub Scouts are boys and girls aged 8-11

They enjoy adventure, imagination, and being outdoors during their weekly one-hour meeting, and occasional sleepovers and camps.

Less screens - and more action, more fun, more friends, and more social skills!

rochesterscouts@outlook.com

Enquiries: Cade Kindness 0429996195

